

# PARTS ORDER FORM

## 250W SeeBrite™ Lighthouse

Part# SBLH250-50, SBLH250-70, SBLH250-100



### **I.A.S. PRODUCTS LTD.**

1415 Dominion Street, North Vancouver, British Columbia, Canada V7J 1B3  
Tel: +1(604) 924-1844 Fax: +1(604) 924-1848 Web Site: [www.iasproducts.com](http://www.iasproducts.com)

Company: \_\_\_\_\_ Site: \_\_\_\_\_

Name: \_\_\_\_\_ Position: \_\_\_\_\_

Phone No: \_\_\_\_\_ Fax No: \_\_\_\_\_

PO Number: \_\_\_\_\_ Serial No: \_\_\_\_\_ Date: \_\_\_\_\_

#### **ORDERING INSTRUCTIONS:**

1. Completely fill out form. Print clearly.
2. Fax, Email, or Phone in your order to IAS Products Ltd. with a valid purchase order number.
3. Review order confirmation, and submit any changes. (Please fax Parts Order page only.)

NO.	PART NAME/ DESCRIPTION	PART NUMBER	QTY	UNITS	PRICE	TOTAL
01	Stainless Steel Protective Cage	SBGC		Each		
02	Cap for Securing Dome	SBCAP/BLK-3		Each		
03	Glass Dome Cover	SBDOME		Each		
04	O-Ring for Dome Seal	GFOR/SB/DM		Each		
05	Lamp Centering Gasket	SBLCG-2		Each		
06	Lamp, 250Watt Metal Halide	ECLP/T15MH-250		Each		
07	Socket Cap Bolt	HDSCB3/16X5/8		Each		
08	Mogul Base	CFMB/TP-1/2		Each		
09	O-Ring for Protective Cage	GFOR/SB/CG		Each		
10	Housing - Complete	SBAD/HG/M-L		Each		
11a	Cord Seal Strain Relief	CFSR/DW5624		Each		
11b	Plastic Washer	CFSR/DW5624		Each		
11c	Threaded Seal Cap	CFSR/DW5624		Each		
12	Heat Shrink (Hsg. Cord Seal Cover)	ECHS/WCSM43		Each		
13	Fork Connectors (Terminal End)	ECTE/FC/16-14		Each		
14	Shackle on Cable Strain Relief	CFNR/SH/SC-5/8		Each		
15	Cord Strain Relief (Optisoc)	CFOP/CPS2		Each		
16	Cable (50', 70', 100')	SBCAB		Feet		
17a	Rear Nut (Connector)	CNFM/B9/RN		Each		
17b	Claw Gland Grip (Connector)	CNFM/B9/GC		Each		
17c	Gland (Connector)	CNFM/B9/GL		Each		
17d	Connector Housing	CNFM/B9/HG		Each		
17e	Insert, 3-Pin (Connector)	CNIN/B9-3/P/T		Each		
17f	Cap for Connector	CNFM/B9/C		Each		
18	Wrench for Cap Adjustment	CFWR/ABS		Each		

IAS Products Ltd. will accept product or parts returned, freight prepaid to manufacturer, at the above address with manufacturer's Returned Materials Authorization number. Upon receipt of the aforesaid, the product or part, if determined defective, will be repaired or replaced at the manufacturer's discretion under terms of warranty. Any product without an RMA number, or arriving freight collect, may be subject to additional administration fees.

# PARTS ORDER FORM

## 250W SeeBrite™ Lighthouse

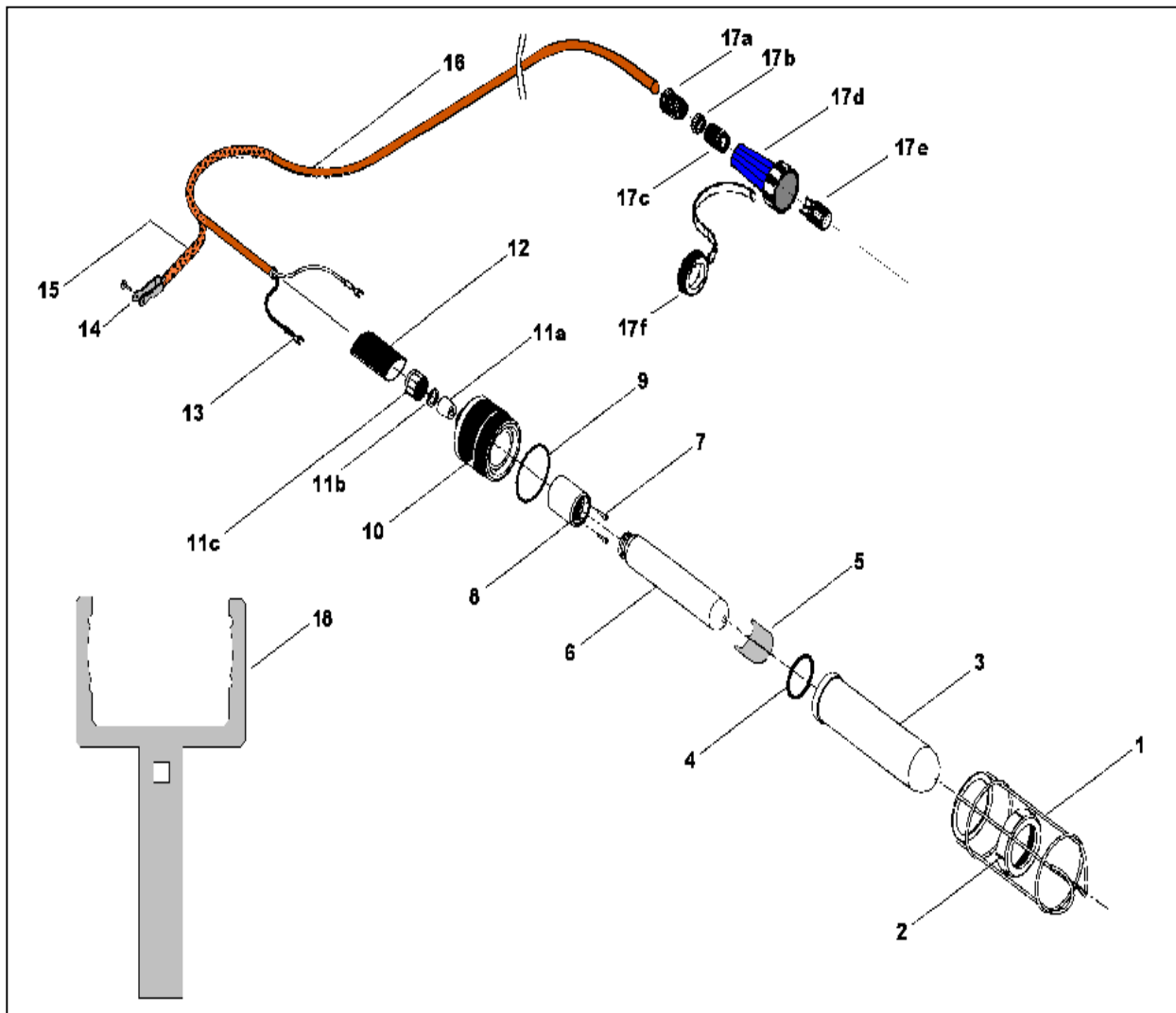
Part# SBLH250-50, SBLH250-70, SBLH250-100



### **I.A.S. PRODUCTS LTD.**

1415 Dominion Street, North Vancouver, British Columbia, Canada V7J 1B3

Tel: +1(604) 924-1844 Fax: +1(604) 924-1848 Web Site: [www.iasproducts.com](http://www.iasproducts.com)



IAS Products Ltd. will accept product or parts returned, freight prepaid to manufacturer, at the above address with manufacturer's Returned Materials Authorization number. Upon receipt of the aforesaid, the product or part, if determined defective, will be repaired or replaced at the manufacturer's discretion under terms of warranty. Any product without an RMA number, or arriving freight collect, may be subject to additional administration fees.